



# NEXIA

## Linje

The new linear luminaire for offices, supermarkets and workspaces. A versatile product that stands out for its technicality, the possibility of different lenses and a very simple installation, as well as being able to combine it with different NEXIA products.

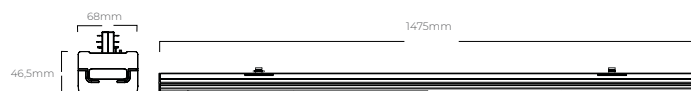


23501 -		Colour	CRI / Temp.	Angle	Led	Dimming	Class
0	White	E	930	9	90°	8	7500 lm/53W
1	Black	F	940	D	Dobule Asym 30°	9	9000lm/63W
				A	Asym 20°		
				E	30°x90° Eliptic		

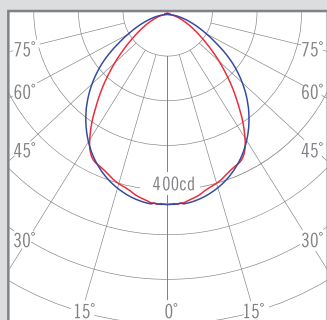
  

1.5 Kg	CRI=90	3-SDCM	IP 20	50.000 h	230 V	DRIVER <5%	LED
--------	--------	--------	-------	----------	-------	------------	-----

\*Single-phase

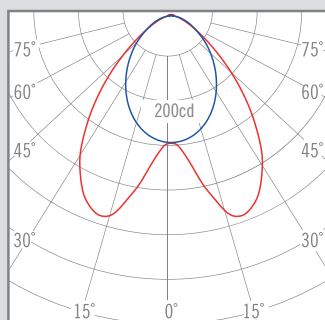


9 Symetric 90°



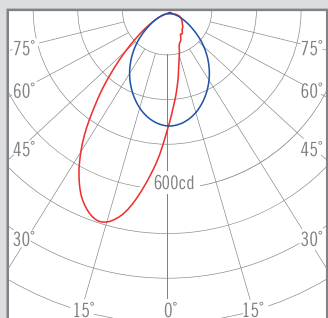
cd / Kl/m  $\eta = 94\%$   
 — c0 - 180 — c90 - 270

D Double Asym 30°



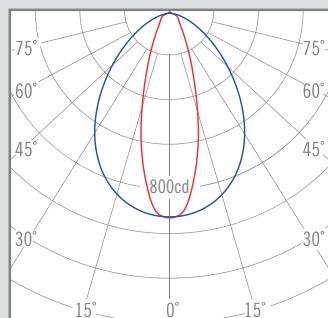
cd / Kl/m  $\eta = 96\%$   
 — c0 - 180 — c90 - 270

A Asym 20°



cd / Kl/m  $\eta = 87\%$   
 — c0 - 180 — c90 - 270

E 30° x 90° Eliptic



cd / Kl/m  $\eta = 96\%$   
 — c0 - 180 — c90 - 270

### DESCRIPCIÓN

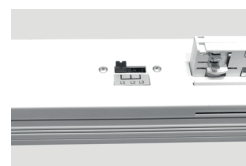
-Linear luminaire the very simple installation. The different optics of the Linje product gives you 4 possibilities of beam angles :

Eliptic 30°x90°, symetric 90°, asymmetric 20° and double asymmetric 30°.

### INSTALLATION

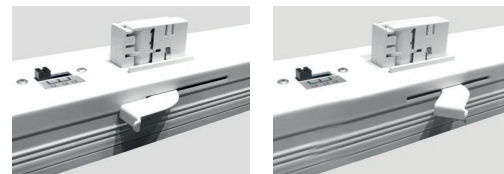
#### STEP 1.

-Track mounted. Select the phase your prefer.



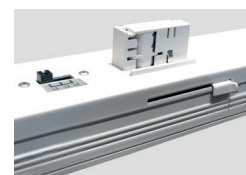
#### STEP 2.

-Unblock the handle and put the fixture on the track.



#### STEP 3.

-Rotate the handle to fasten the fixture (block).



QUALITY CERTIFICATES:

