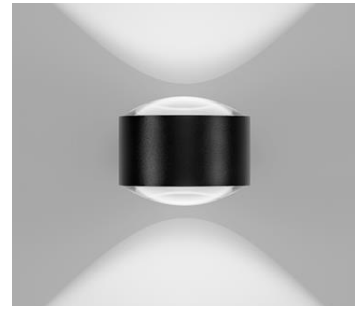


SPIRIT

SPECIFICATIONS

MOUNTING		WALL	
POWER	[W]	2x4,2	
LAMP		built-in LED	
LUMINOUS FLUX*	[lm]	2x620/2x650	
LIGHT COLOUR	[K]	2700/3000	
CRI		>90	
BEAM ANGLE	[°]	-	
AVERAGE LIFETIME	[h]	L80/B50.000	
LUMINOUS EFFICACY	[lm/W]	154	
POWER SUPPLY	[V] [A]	220-240V AC 50/60 Hz	
LED-DRIVER		INCLUDED	
DIMMING		PHASE DIM	
THROUGH-WIRING		NO	
MATERIAL		ALUMINUM	
INGRESS PROTECTION		IP65	
PROTECTION CLASS		I	
NET WEIGHT	[kg]	0,92	
GROSS WEIGHT	[kg]	0,94	
COLOUR (HOUSING)		WHITE ~RAL9003	n/a
COLOUR (HOUSING)		BLACK ~RAL9005	



LIGHT DISTRIBUTION

n/a

*Luminous flux values are nominal LED data at a operating temperature of 25° C

OPTIONS / OPTIONAL ACCESSORIES

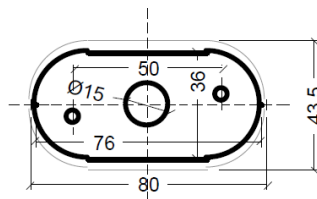
Colours



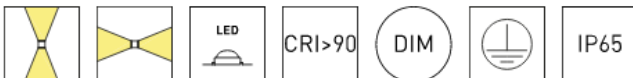
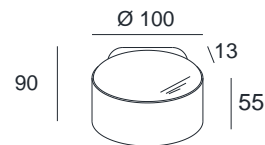
white

black

MOUNTING DIMENSIONS



FIXTURE DIMENSIONS



DLS LIGHTING

www.dlslighting.com

*DLS
LIGHTING