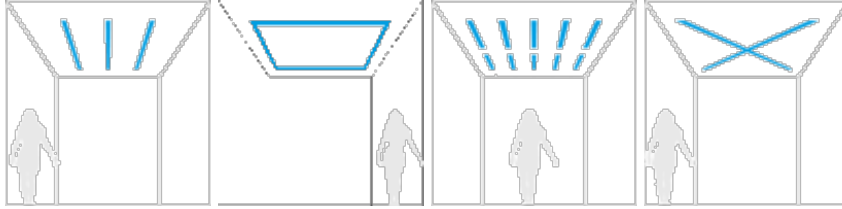




7004 / U-BLADE 120X120

Design ATELIER SEDAP

High strength, U-shaped plaster profile for recessing MR16, GU10, LED or QR111 downlights in walls and ceilings.



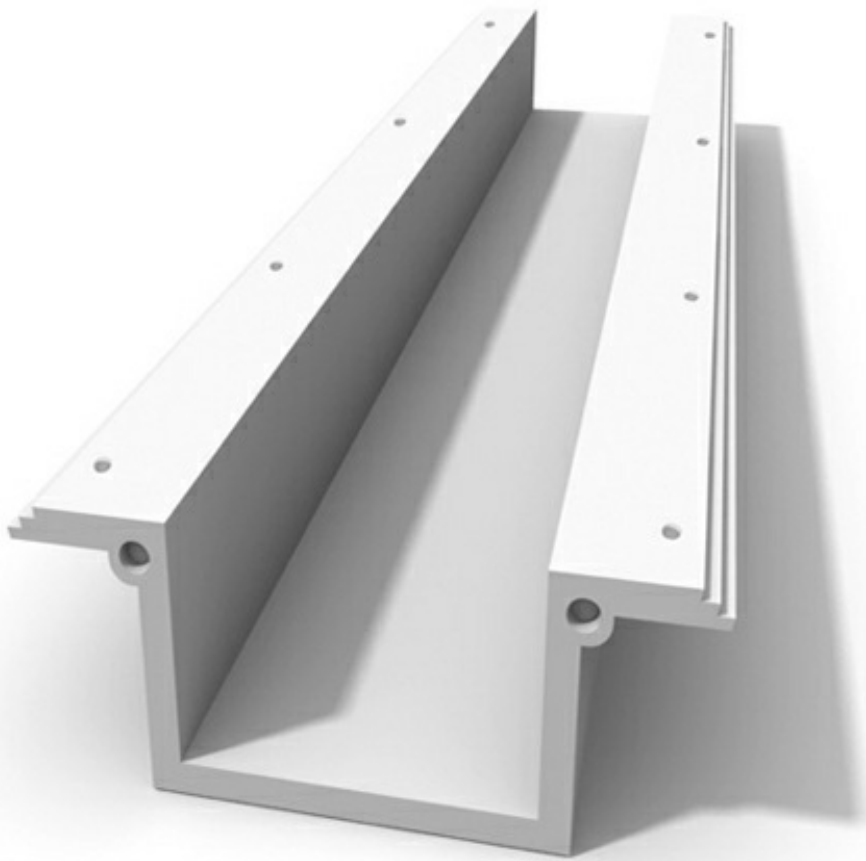
Lines

Frame

Sections

Intersection

Examples of mounting



FINISHES

Natural plaster finish



AA

LIGHT SOURCES

REFERENCE	DESCRIPTION	LENGTH
7004.1	Profile U-BLADE 120x120 / 1 meter element	1 M
7004.2	Profile U-BLADE 120x120 / 2 meter element	2 M

Profile in high strength plaster, for direct recessed lighting.

Length of one element : 1m (7004.1) ou 2m (7004.2)

Recessing depth : 210mm

Premoulded end caps available (ref. 7005).

Recommended equipment :

MR16 or GU10 adjustable downlights (dichroic or LED)

(available as an option in white finish - hole cutter 75mm).

or

Adjustable white QR111 downlights (bulb and power supply not included)

(diam. 145mm or 160x160mm)

or

Round adjustable LED downlight (not included)

Discover the mounting instructions.

LED COB, MR16 and GU10 EQUIPEMENTS

REFERENCE	DESCRIPTION
711060203-0	Adjustable white downlight - COB LED 230/240V 9.5W / 36° / 760 lm / IRC>90 / IP20 Diam. 68mm - Height 80mm Dimmable Phase Cut (TRIAC)
711060201-0	Adjustable white downlight - COB LED 350mA 12.2W / 36° / 1170 lm / IRC>90 / IP20 Diam. 68mm - Height 80mm Dimmable DALI, 1-10V or PushDim (power supply not included)
011060168-0	Downlight IP 65 LED COB white (CREE) 9W / 55° / 650 lm / 200mA / 3000°K / IRC>80 / IP65 2700° or 3000°K (Not dimmable power supply included)
011100294	White downlight (bulb and power supply not included) P.maxi : 50W / GU10 - 230V - Diam. 68mm - Height 90mm

QR111 ÉQUIPEMENT

REFERENCE	DESCRIPTION
011100292	White, adjustable round QR111 downlight. (bulb and power supply not included) P.maxi : 75W / G53 - 12V
011100290	Square, adjustable round QR111 downlight. (bulb and power supply not included) P.maxi : 75W / G53 - 12V